



DAVID BREWSTER



NORTHAMPTON SALTIMBANQUES, 40X30 INCHES, CHARCOAL & LIQUIFIED PASTEL ON MI-TEINTES, 2010

COVER: FLOODED COLRAIN, 34X69 INCHES, OIL ON MI-TEINTES, 2011

CELEBRATING TWENTY YEARS: 1991-2011

OCTOBER 4 - 29, 2011

OPENING RECEPTION: FRIDAY, OCTOBER 14, 5 - 7 PM

GROSS MCCLEAF GALLERY
127 SOUTH SIXTEENTH STREET
PHILADELPHIA, PA 19102
215-665-8138

HOURS: TUESDAY - SATURDAY, 10 - 5

WWW.GROSSMCCLEAF.COM



GEORGE PLATT BRIDGE VIEW, 23.75X38 INCHES, OIL ON LINEN, 1988



The first time that I saw a painting by David Brewster was at the Contemporary Philadelphia Artists Exhibit at the Philadelphia Museum of Art in 1990. I was struck by the explosive energy of his painting, *Fall of House at Landhope*, and the drama of the color and brushwork. But there was something else inherent in the painting – the beginning of his life-long commitment to a distinctly American view of landscape typified by the rugged strength of a Winslow Homer or a George Bellows, and the modernist optimism of a Joseph Stella.

Years ago, on my way to work, I saw David painting on the George Platt Bridge – hanging on to a canvas in the wind as cars whizzed by. As his dealer, I had mixed feelings about cautioning him about his personal safety versus excitement about what warranted such heroics. Brewster is a painter who attacks his subject matter and uses his materials with a visceral intensity that relates to Pollack or DeKooning's action paintings of the 1950's and 60's. At the same time, there is a sense of wonder that is inherent in all of Brewster's painting; a distinctly American exploration and discovery as he forces the viewer to address with him the difficult task of coming to terms with an increasingly indecipherable and unromantic sky and earth. During the twenty years that Brewster has shown at Gross McCleaf, he has been persistent and consistent in his pursuit of a painting language that defines our times as he confronts the visual challenges that are omnipresent in our ever-changing contemporary environment.

Sharon Ewing, Director

POST INDUSTRIAL PHILADELPHIA: 1990-1995



TIDEWATER CRANE, 28X44 INCHES, OIL ON LINEN, 1992



LIFEBOAT AND THICK WASTE OIL, 36X52 INCHES, OIL ON LINEN, 1993

BALLINGLEN ARTS FOUNDATION
CO. MAYO, IRELAND: 1994-2005



KILLBRIDE CHIFFONIER, 15X19 INCHES, OIL ON MI-TEINTES, 2004



CABINTOWN, 26X28 INCHES, OIL ON MI-TEINTES, 1996

HIGH DESERT
DEEP SPRINGS, CALIFORNIA: 2003-2007



HARSH CLIMATIC CONDITIONS, 26X48 INCHES, OIL ON GATORBOARD, 2007



HORSE THIEF CANYON, 39X29 INCHES, OIL ON MI-TEINTES, 2007

NEW ENGLAND
HALIFAX, VERMONT: 2000-2009



BROKEN WIND TURBINE, 30X48 INCHES, OIL ON MI-TEINTES, 2009



SUGAR STEAM, 32X32 INCHES, OIL ON MI-TEINTES, 2008

COMMISSIONED HISTORICAL INTERPRETATIONS
STUDIES FOR WHARTON BUSINESS SCHOOL: 2012



BETHLEHEM IRON COMPANY:VIEW FROM NISKY HILL ACROSS LEHIGH RIVER 1873, 40X60 INCHES, CHARCOAL & LIQUIFIED PASTEL ON MI-TEINTES, 2011



BETHELEHEM WORKMEN ON CASTING FLOOR 1882, 40X60 INCHES, CHARCOAL & LIQUIFIED PASTEL ON MI-TEINTES, 2011

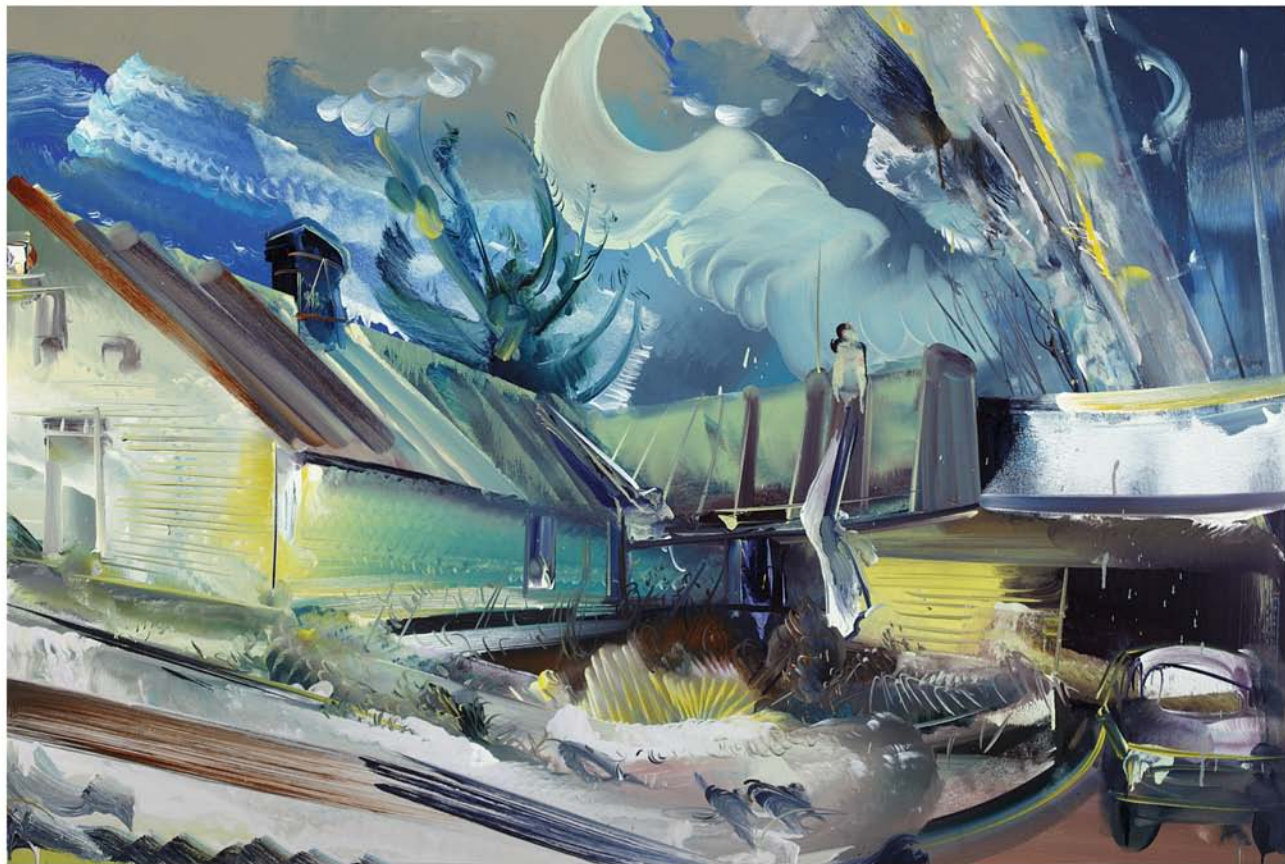
NEW WORK 2010-2011



OSBORN HOUSE, 40X48 INCHES, OIL ON MI-TEINTES, 2011



BLUE POWERLINE SWATH, 40X48 INCHES, OIL ON MI-TEINTES, 2011



GRACIA RICE'S CENTER CHIMNEY, 40X48 INCHES, OIL ON MI-TEINTES, 2011



GOLDEN TRIANGLE WITH LOG HOUSE, 36X40 INCHES, OIL ON MI-TEINTES, 2011



TRESSELLED SPIRE, 30X40 INCHES, OIL ON MI-TEINTES, 2010



QUICK RISE IN THE RIVER, 35X70 INCHES, OIL ON GATORBOARD, 2011



BARN FLATTENED TO THE GROUND, 40X48 INCHES, OIL ON MI-TEINTES, 2011

DAVID BREWSTER'S WORK HAS BEEN THE SUBJECT OF OVER 25 SOLO GALLERY EXHIBITIONS IN NEW ENGLAND, BOSTON, NEW YORK, PHILADELPHIA, BALTIMORE, IRELAND, AND FRANCE. BREWSTER HAS PARTICIPATED IN NUMEROUS GROUP SHOWS IN THE U.S AND ABROAD. HIS WORK HAS BEEN REVIEWED IN *ART IN AMERICA*, *ART NEW ENGLAND*, *ART SCOPE*, *THE PHILADELPHIA INQUIRER*, *THE BOSTON GLOBE*, AND *THE BALTIMORE SUN*. THE ARTIST IS REPRESENTED IN PRIVATE AND MUSEUM COLLECTIONS INCLUDING THE BERMAN MUSEUM, THE PENNSYLVANIA ACADEMY OF FINE ARTS, JOHNS HOPKINS CAREY BUSINESS SCHOOL, THE ORTON FOUNDATION, PRINCETON UNIVERSITY ART MUSEUM AND THE PENNSYLVANIA STATE MUSEUM. HE HAS RECEIVED NUMEROUS AWARDS INCLUDING THE POLLOCK-KRASNER AND TACONIC BERKSHIRE FOUNDATION GRANTS AS WELL AS FELLOWSHIPS AT THE BALLINGLEN ARTS AND KLOTS FOUNDATIONS. HE IS CURRENTLY EXECUTING COMMISSIONS FOR THE UNIVERSITY OF PENNSYLVANIA'S WHARTON BUSINESS SCHOOL AND THE VERMONT COMMUNITY FOUNDATION. HE RECEIVED HIS MFA FROM THE UNIVERSITY OF PENNSYLVANIA AND LIVES IN HALIFAX, VERMONT, WHERE HE FOUNDED THE WINDY MOWING ARTIST RESIDENCY. *CELEBRATING TWENTY YEARS* IS DAVID BREWSTER'S 10TH SOLO EXHIBITION AT GROSS MCCLEAF.

PHOTOGRAPHY : JOHN POLAK, EASTHAMPTON, MA
PHIL J. WEBER, BALTIMORE, MD

WEB DESIGNER: JOHN DIGEORGE, GOOD BEAR PRODUCTIONS, BRATTLEBORO, VT
DESIGN: VANESSA PAEY

PUBLICATION © 2011 : GROSS MCCLEAF GALLERY , PHILADELPHIA , PA

ART © 2011 : DAVID BREWSTER

PRINTED BY: PS PRINT



VERMONT STATE CAPITAL FIRE OF 1857: TEMPLE IN THE WILDERNESS, 35X70 INCHES, OIL ON GATORBOARD, 2011